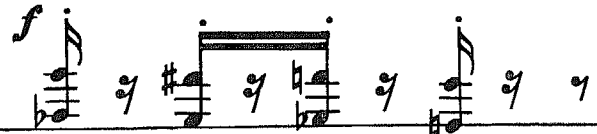


Ноктюрн

Ноты с сайта www.notarhiv.ru

Largo
нар *p*



В ок - но по-сту- ча - ла

пол-ночь, и стук е-е был беззвучен, на

сму - г лой ру - ке бле - сте - ли бра - сле - ты реч - ных из.

f

p

p

p **Molto più mosso** *mf*

лу - чин. Ду - ша, ду -

p *pp*

7 7 7

poco a poco cresc.

ша мо - я, став ре -

7 7 7 7

Музыкальный фрагмент, состоящий из трех стaves. Верхний став — мелодия с нотами, соответствующими русским словам. Второй став — ритмическая фигура с семизвучными аккордами. Третий став — басовый став с гармоническим сопровождением. В начале мелодии и ритмической фигуры есть скобки, охватывающие несколько тактов.

ко ю, иг.

Музыкальный фрагмент, состоящий из трех стaves. Верхний став — мелодия с нотами, соответствующими русским словам. Второй став — ритмическая фигура с семизвучными аккордами. Третий став — басовый став с гармоническим сопровождением. В начале мелодии и ритмической фигуры есть скобки, охватывающие несколько тактов.

ра ла под

Музыкальный фрагмент, состоящий из трех стaves. Верхний став — мелодия с нотами, соответствующими русским словам. Второй став — ритмическая фигура с семизвучными аккордами. Третий став — басовый став с гармоническим сопровождением. В начале мелодии и ритмической фигуры есть скобки, охватывающие несколько тактов.

звезд ной,

звезд - ной кров.

7 7 *f* 7 7

Detailed description: This system contains the first two staves of a musical score. The top staff is a vocal line in treble clef with a key signature of one sharp (F#). It features a melodic line with a slur over the first two notes and a fermata over the third. The lyrics "звезд - ной кров." are written below the staff. The bottom two staves are piano accompaniment. The right hand plays a rhythmic pattern of eighth notes with a slur and a '7' (finger number) below it. The left hand plays a bass line with a '7' below it. A dynamic marking of *f* (forte) is placed between the piano staves.

- лей.

7 7 poco a poco dim.

Detailed description: This system contains the third and fourth staves. The vocal line continues with the lyrics "- лей." and has a fermata over the final note. The piano accompaniment continues with the same rhythmic pattern in the right hand and a bass line in the left hand. A dynamic marking of *poco a poco dim.* (poco a poco diminuendo) is placed at the end of the system.

Detailed description: This system shows the piano accompaniment for the third system. The right hand plays a continuous eighth-note pattern with slurs. The left hand has a long, sustained chord in the bass register, indicated by a large oval.

mp *p* *p*

2/4 4/4

Detailed description: This system shows the piano accompaniment for the fourth system. The right hand plays eighth-note patterns with slurs. The left hand has a long, sustained chord in the bass register. Dynamic markings of *mp* (mezzo-piano), *p* (piano), and *p* are placed below the staff. Time signature changes from 2/4 to 4/4 are indicated at the end of the system.

Tempo I

А вре - мя на ци - фер.

f

p

p

Detailed description: This system contains the first two measures of the piece. The vocal line is in 4/4 time, starting with a whole rest followed by a half note G4, then quarter notes A4, B4, and C5. The piano accompaniment features a rhythmic pattern of eighth notes in the right hand and a bass line in the left hand. Dynamics include *f* for the vocal and *p* for the piano accompaniment.

-бла - тах у - же ис - те - ка - ло

più f

p

Detailed description: This system contains the next two measures. The vocal line continues with quarter notes D5, E5, and F5, followed by a half note G5. The piano accompaniment maintains the rhythmic pattern. Dynamics include *più f* for the vocal and *p* for the piano accompaniment.

кро - вью.

più f

ff

Detailed description: This system contains the final two measures. The vocal line has a whole rest in the first measure followed by a half note G5. The piano accompaniment continues with the same rhythmic pattern. Dynamics include *più f* for the first measure and *ff* for the second measure.